

Instruction Manual

Smartinterface USB (OS X)



Instruction Manual - Smartinterface USB (OS X) - MAC

At first, please install the Suunto Dive Manager (SDM) Software on your PC.

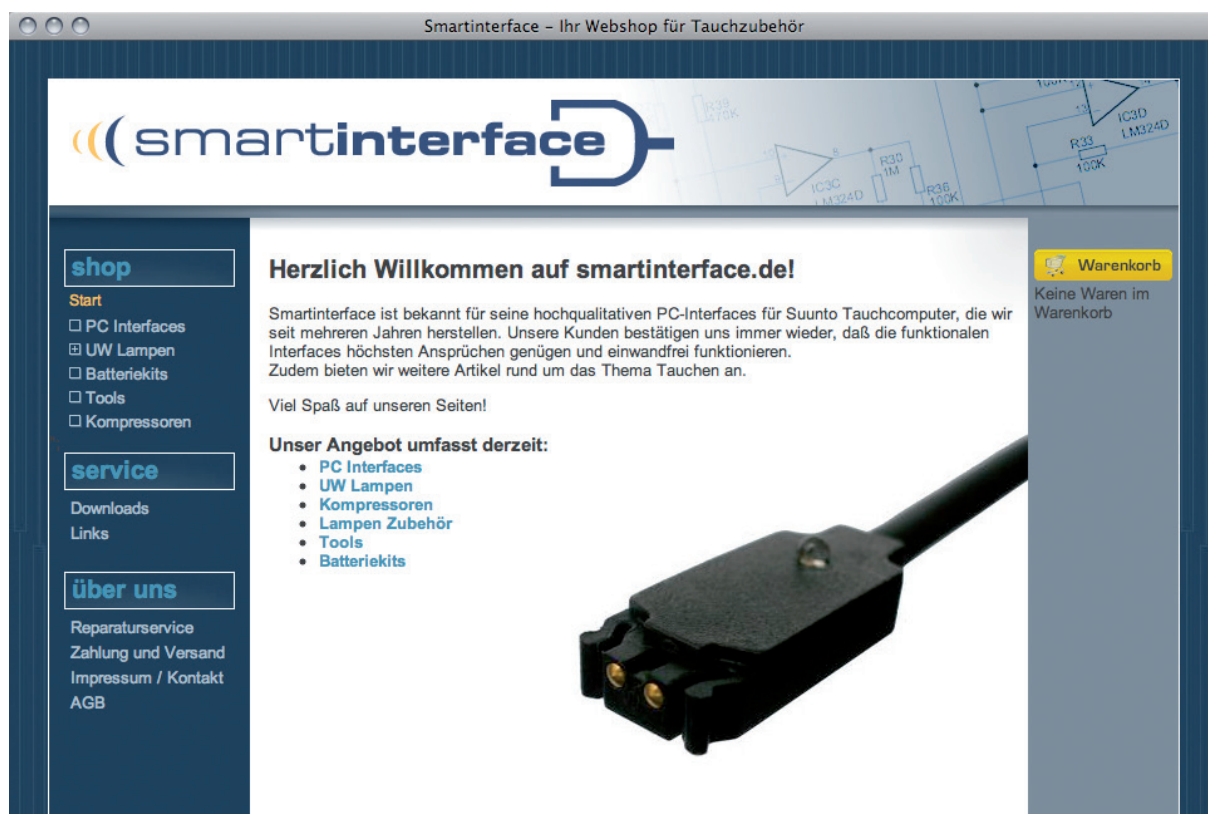
In order to use the smart interface on Apple operating systems, an additional driver must be installed.

You can download the Drivers and the Software under: <http://www.smartinterface.de>.

Before connecting the USB interface to an available USB port on your computer, you must complete the following installation.

Attention: Please close the SDM Software before you install the USB Driver!

Smartinterface USB OS X (MAC)

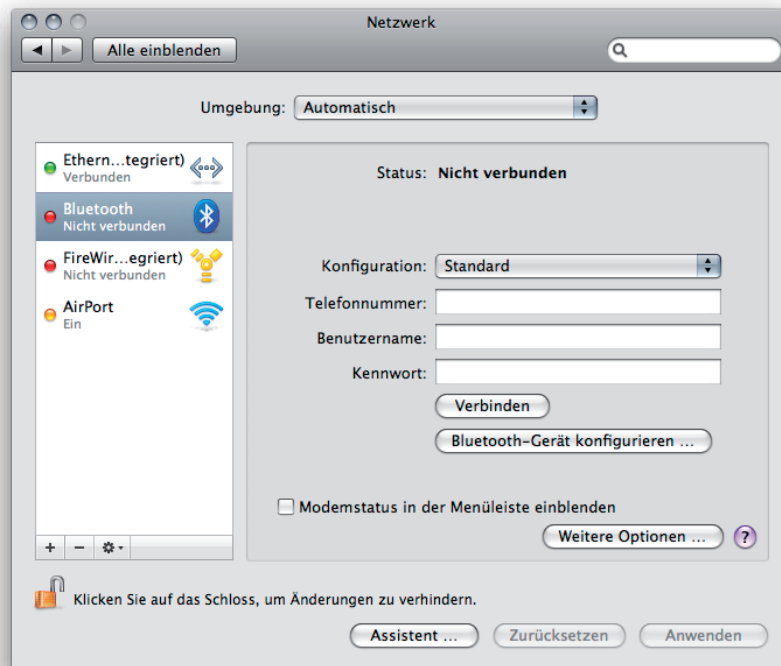


1.0 Download the driver from the website.
(The dive computer is NOT yet connected)

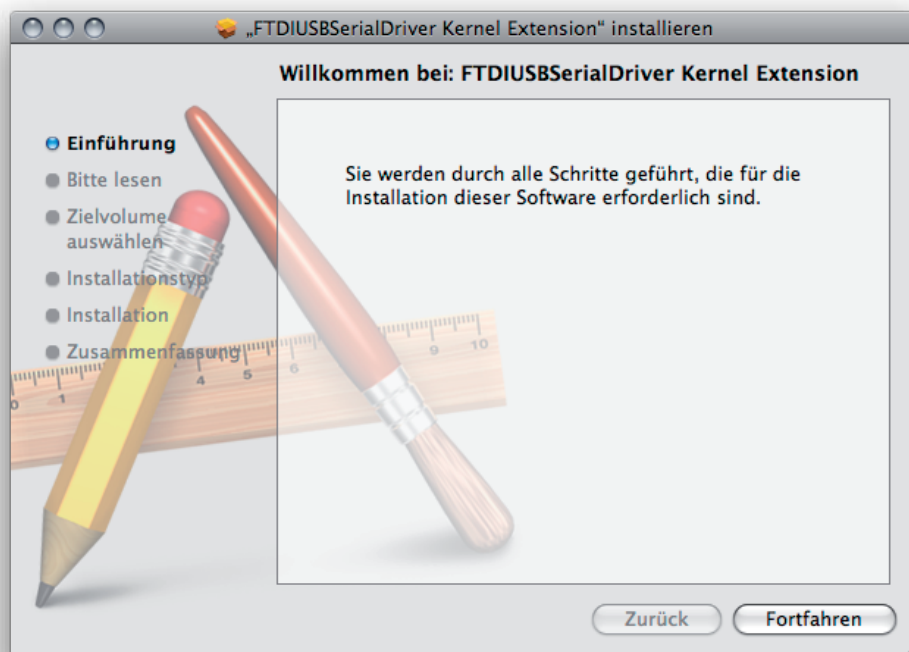


1.1 Select OS X or OS X (Intel) depending on your computer type.

Smartinterface USB OS X (MAC)

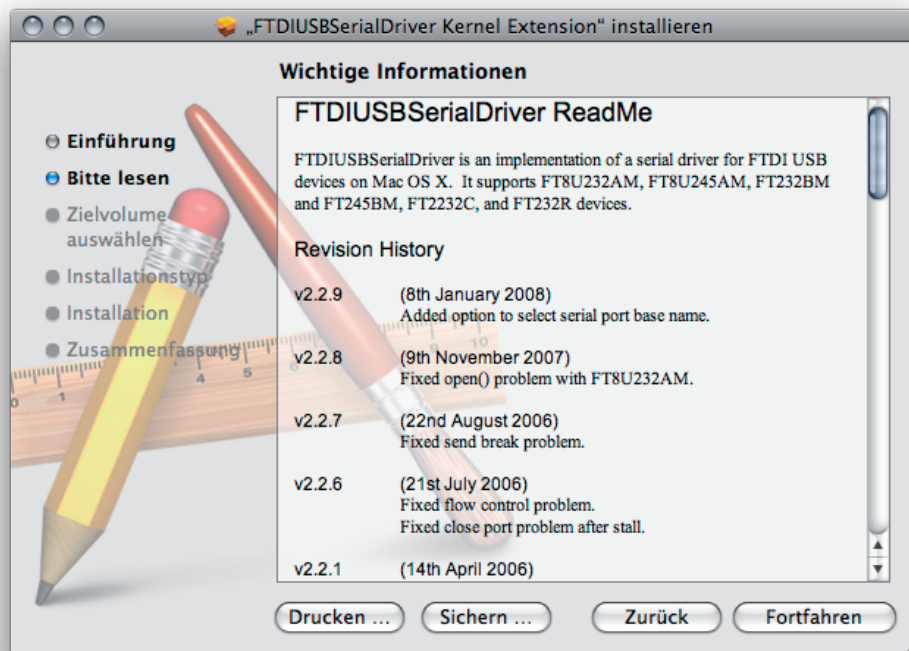


1.2 After the download, open the image and double click on the packet.

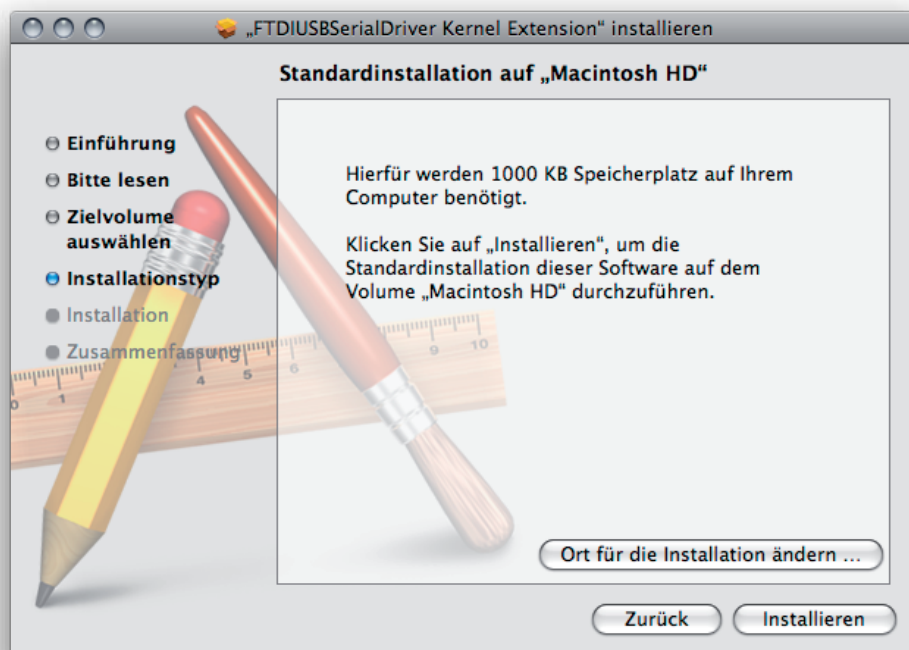


1.3 Click on Continue to confirm this step.

Smartinterface USB OS X (MAC)

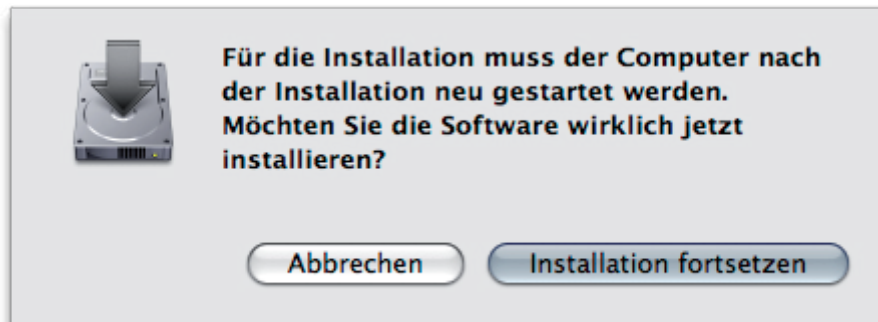


1.4 Click on Continue to confirm this step.

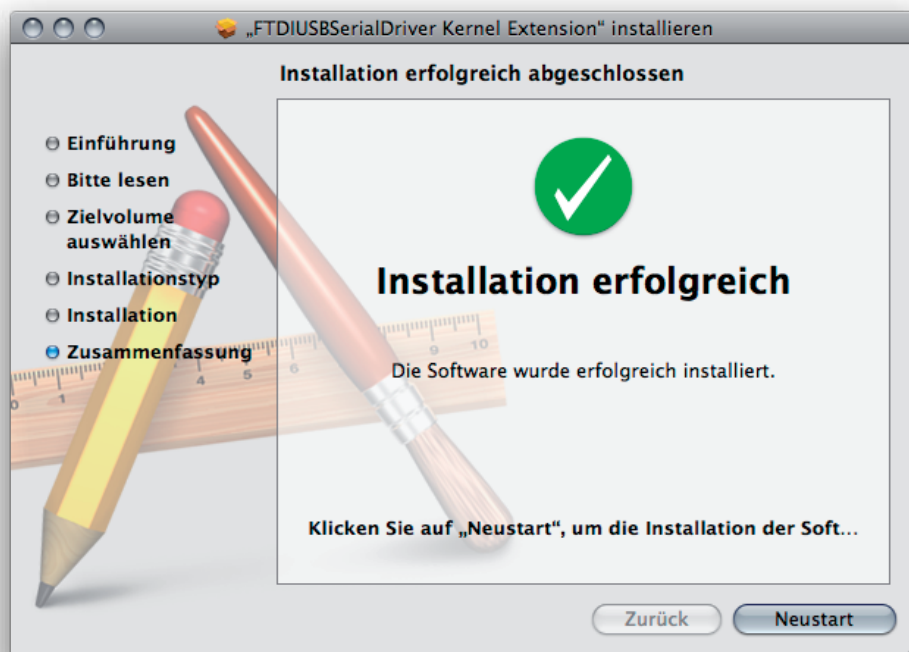


1.5 Click on the „Install“ key.

Smartinterface USB OS X (MAC)



1.6 Click on Continue Installation to confirm this step.
(Key in your name and password when prompted.)

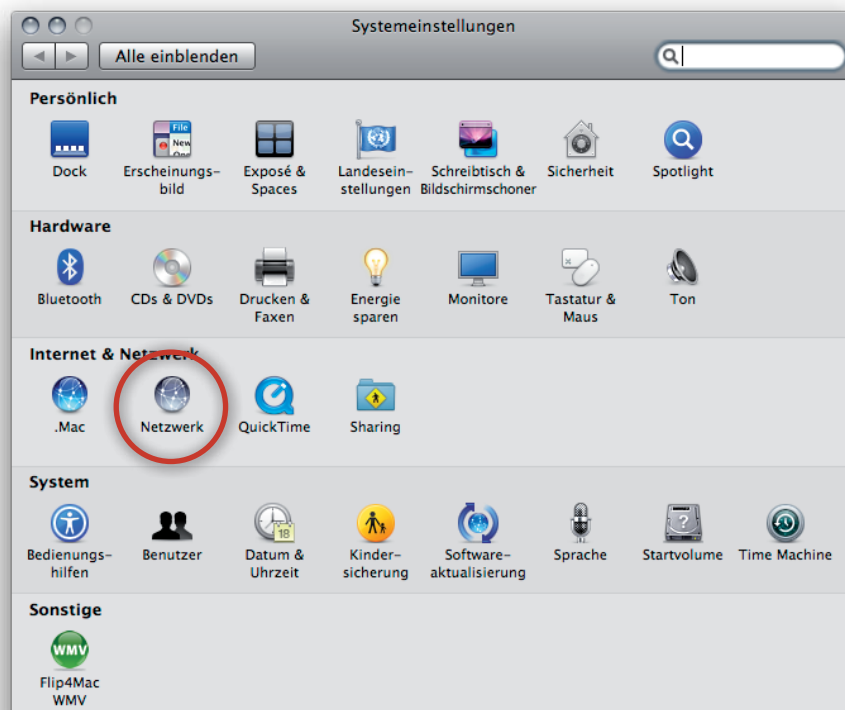


1.7 The installation is now complete, click on „Restart“.

Smartinterface USB OS X (MAC)

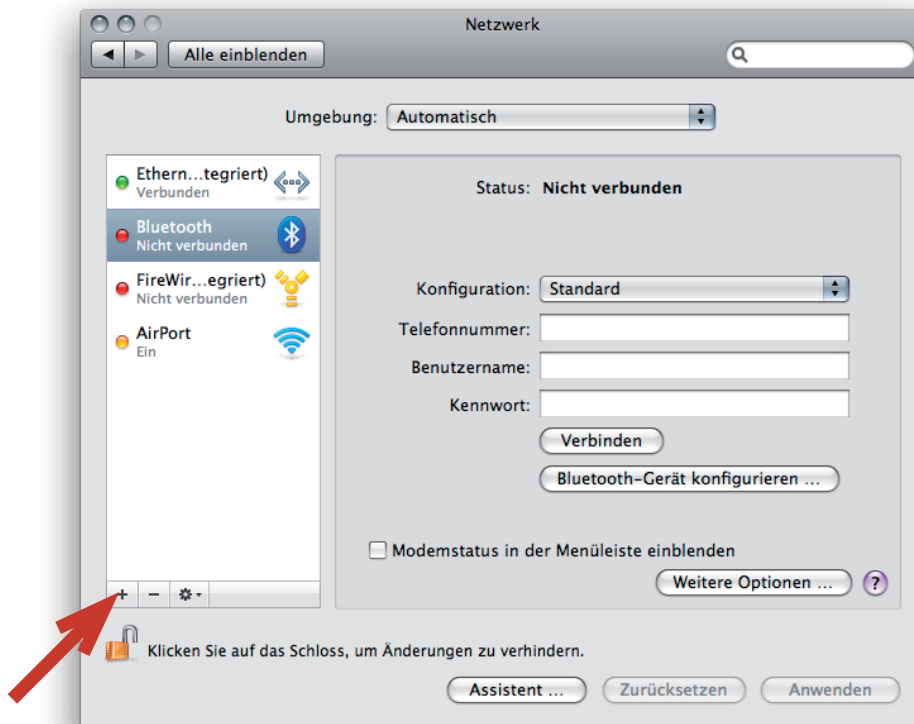


2.0 Shut down the smart interface on your computer once it has restarted.
(The diver computer is NOT yet connected)

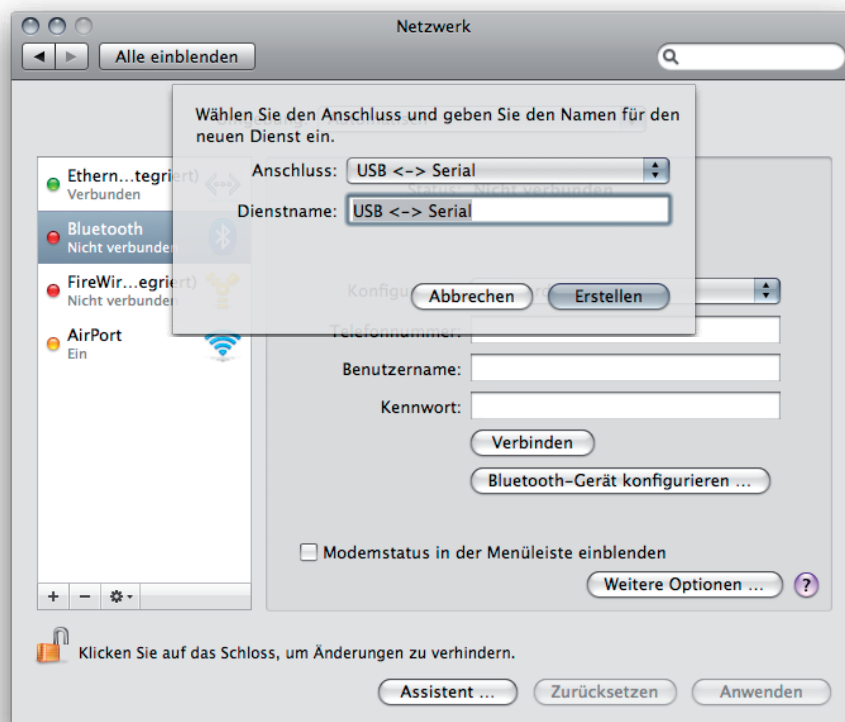


2.1 Now go into system settings and click on Network.

Smartinterface USB OS X (MAC)

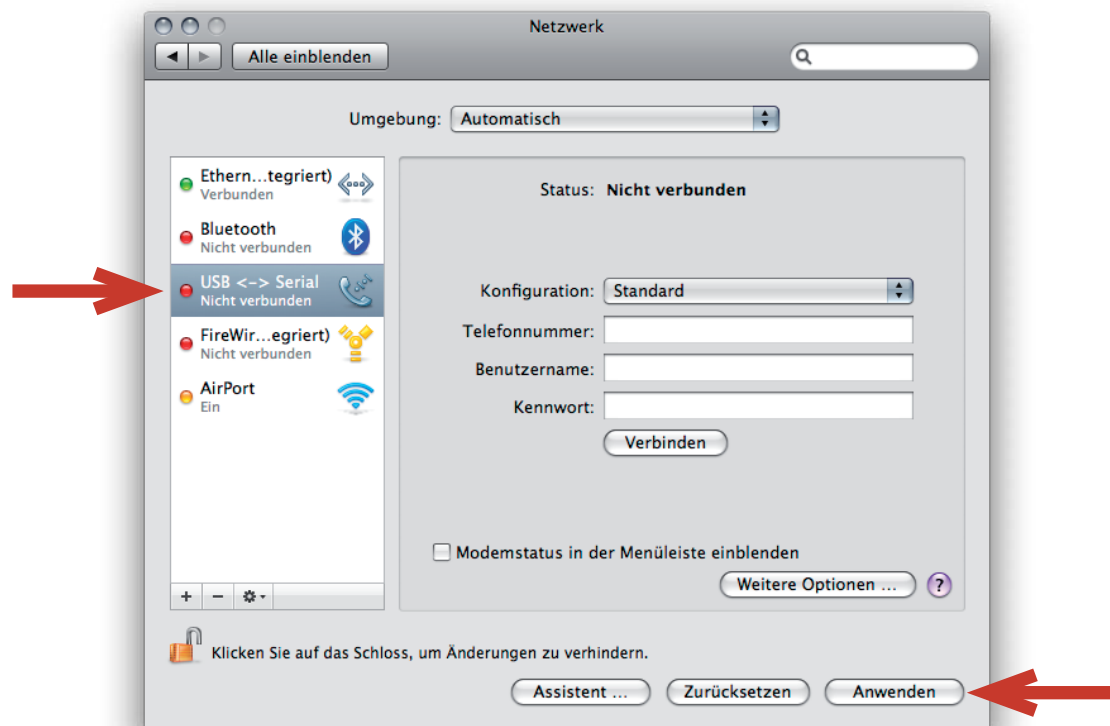


2.2 Click on „Plus“ so that you can add the new interface.

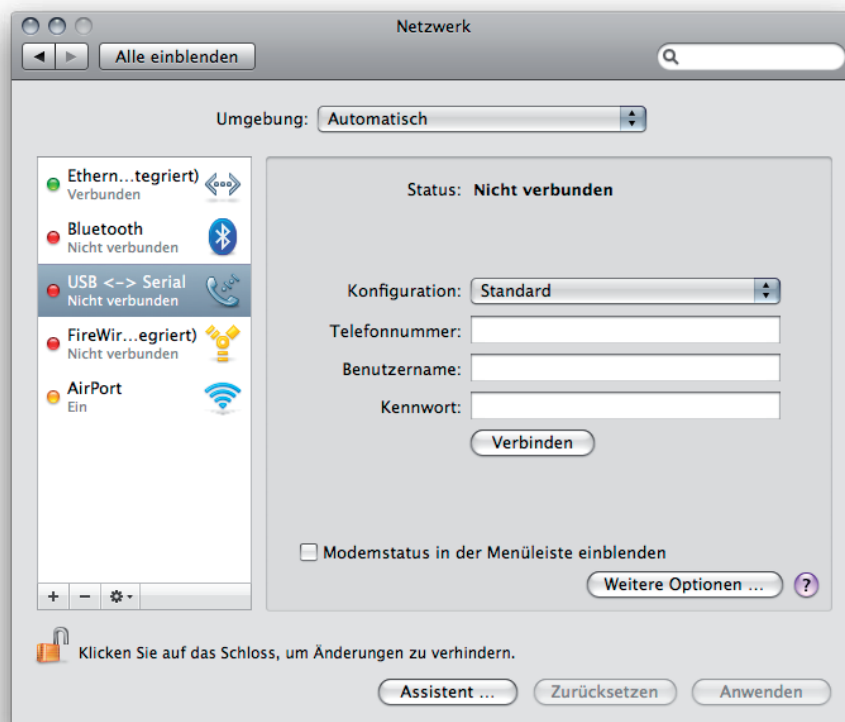


2.3 Choose the new connection „USB < - > Serial“ and click on „Create“.

Smartinterface USB OS X (MAC)



2.4 The new interface is now installed, finally click on „Apply“.



2.5 Exit system settings. (The dive computer is not yet connected!)

Smartinterface USB OS X (MAC)



3.0 Switch On Dive Computer (TC) „Push Mode“ Button 3 seconds.



3.1 Push „Mode“ Button once.

Smartinterface USB OS X (MAC)

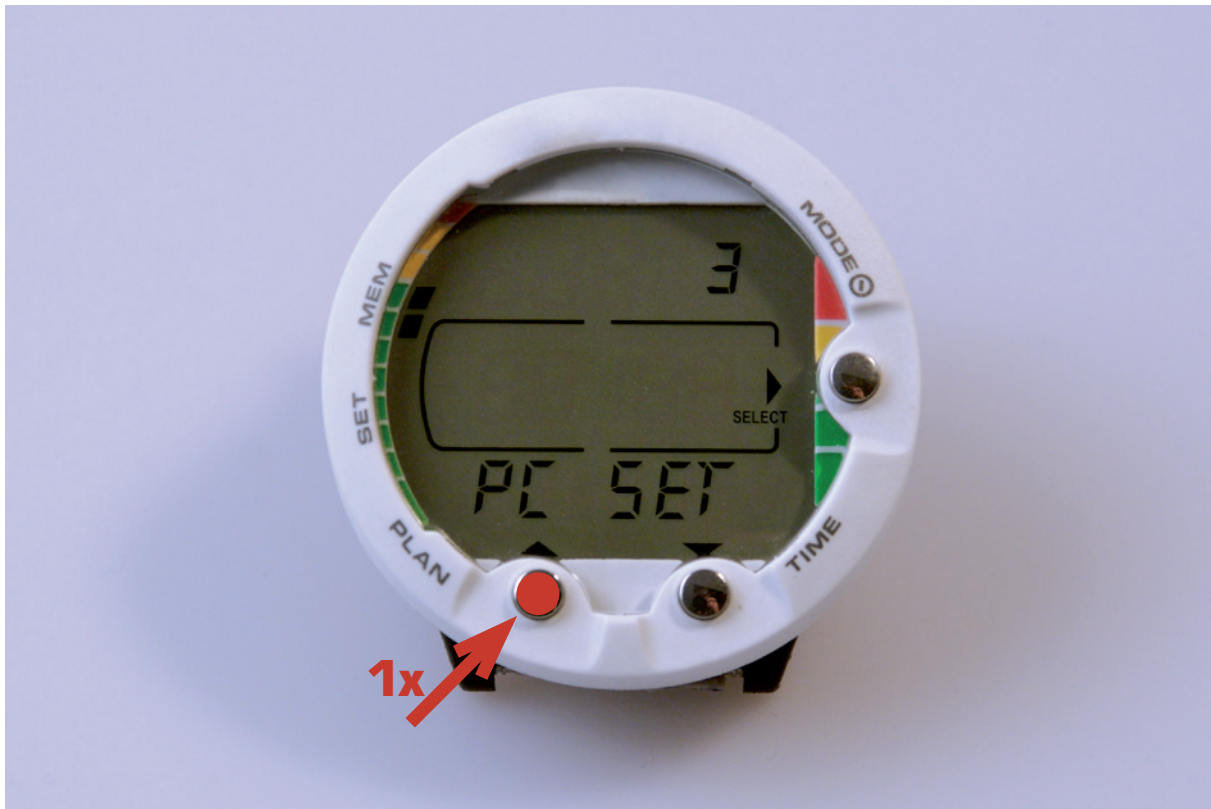


3.2 Push „Time“ Button once.

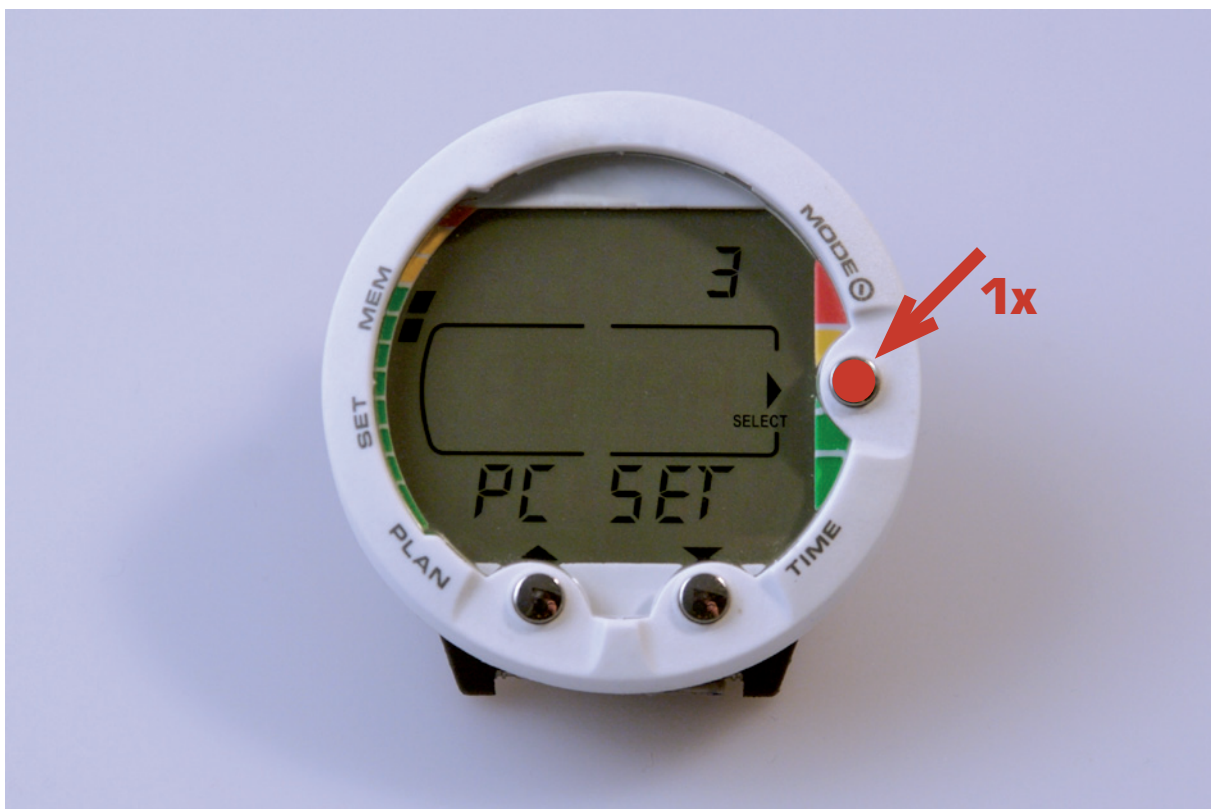


3.3 Push „Mode“ Button once.

Smartinterface USB OS X (MAC)



3.4 Push Button „Plan“.



3.5 Push „Mode“ Button again. Now the TC is in “Transfer Mode”

Smartinterface USB OS X (MAC)



4.0 Connect the Interface with the Divecomputer.



4.1 The Connector is protected against polarity reversal and will lock in the Divecomputer with low pressure.

Smartinterface USB OS X (MAC)

Datatransfer

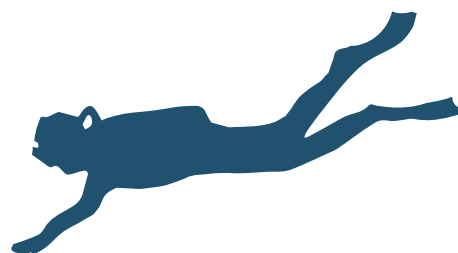
The Smartinterface is now ready for Use. Start your Dive Manager Software like SDM from Suunto. Make sure, that the Divecomputer is connected before you start the Manager Software.



After 5 minutes of no data transfer activity the dive computer will return to time mode.

Index of Contents

1.0	Download the driver from the website. (The dive computer is NOT yet connected)	2
1.1	Select OS X or OS X (Intel) depending on your computer type.	2
1.2	After the download, open the image and double click on the packet.	3
1.3	Click on Continue to confirm this step.	3
1.4	Click on Continue to confirm this step.	4
1.5	Click on the „Install“ key.	4
1.6	Click on Continue Installation to confirm this step. (Key in your name and password when prompted.)	5
1.7	The installation is now complete, click on „Restart“.	5
2.0	Shut down the smart interface on your computer once it has restarted. (The diver computer is NOT yet connected)	6
2.1	Now go into system settings and click on Network.	6
2.2	Click on „Plus“ so that you can add the new interface.	7
2.3	Choose the new connection „USB < - > Serial“ and click on „Create“.	7
2.4	The new interface is now installed, finally click on „Apply“.	8
2.5	Exit system settings. (The dive computer is not yet connected!)	8
3.0	Switch On Dive Computer (TC) „Push Mode“ Button 3 seconds.	9
3.1	Push „Mode“ Button once.	9
3.2	Push „Time“ Button once.	10
3.3	Push „Mode“ Button once.	10
3.4	Push Button „Plan“.	11
4.0	Connect the Interface with the Divecomputer.	12
4.1	The Connector is protected against polarity reversal and will lock in the Divecomputer with low pressure.	12



Publisher Technisches Büro Kühnhold
Ehestorfer Weg 155
21075 Hamburg · Germany

<http://www.smartinterface.de> · info@smartinterface.de

Copyright All images and text in this instruction manual, as well as the instruction manual itself are copyright protected, any further use must be approved in writing by www.smartinterface.de.

Copyright and labeling All brands and trademarks specified within the description and, where applicable, protected by a third party are subject without restriction to the terms and conditions of the respectively valid right to use a symbol and the ownership rights of each registered owner.
The mere mention thereof shall not be construed to represent that the trademarks are not protected by third party rights! The brand names and trademarks used in this documentation are the property of the respective rights owners and are used here only for descriptive purposes.

Disclaimer The devices, tools and interfaces were thoroughly tested prior to the delivery. Connection, use and operation shall be at your own risk. No liability shall be assumed for damage or loss of data or lack of waterproofness.

Recycling European Union – Disposal information: This symbol indicates that this product must be disposed of pursuant the valid legal provisions and separated from domestic waste.
Bring this product to an official collection point for disposal. Products can be brought to some collection points for disposal free of charge. Separate collection and recycling conserves raw material reserves and ensures compliance with all regulations for the protection of health and the environment when recycling the product.



CE  **RoHS**✓
WEEE-Reg.-Nr. DE82497460