

Instruction Manual

Smartinterface Drak (For Mares Puck, Nemo Wide, Nemo Air)



Instruction Manual - Smartinterface Drak

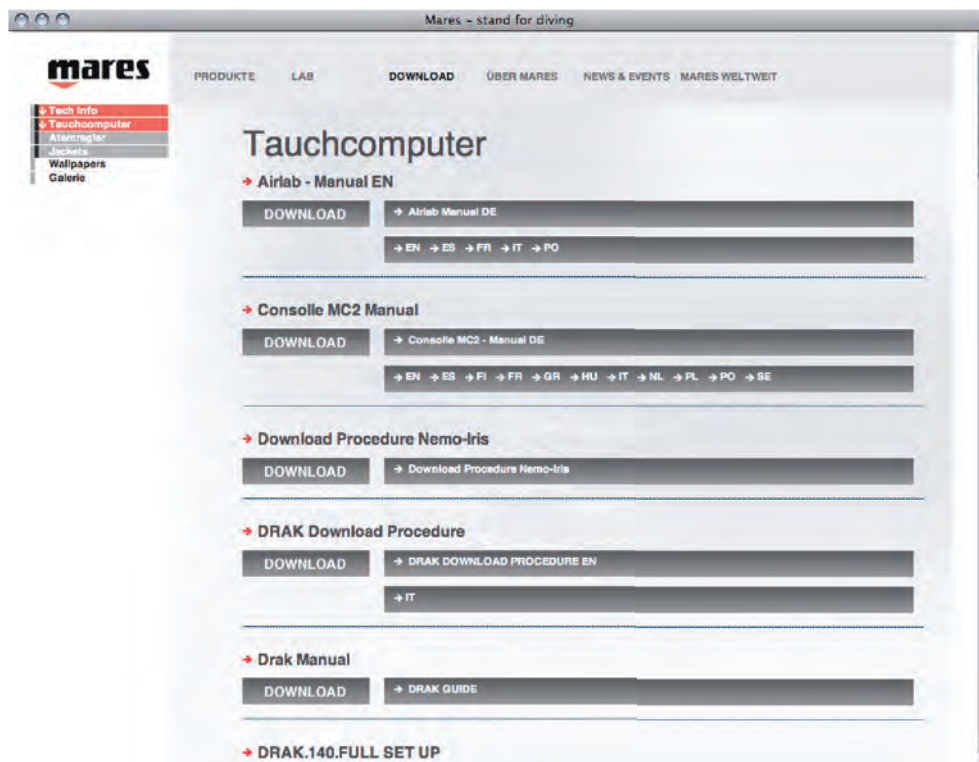
Do not connect the interface with your computer yet. A driver is required first, which is automatically installed with the read out software.

The read out software is available to download from Mares free of charge.

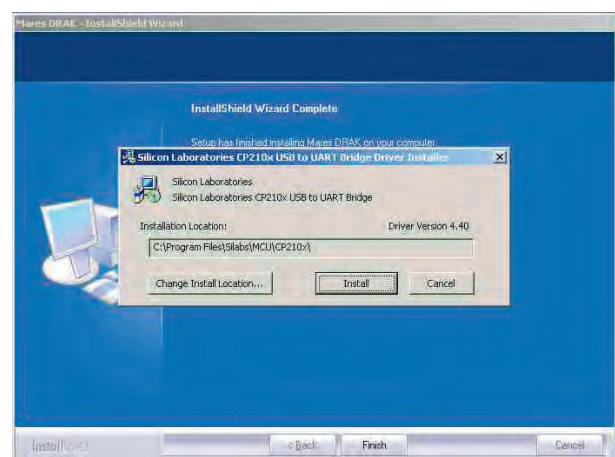
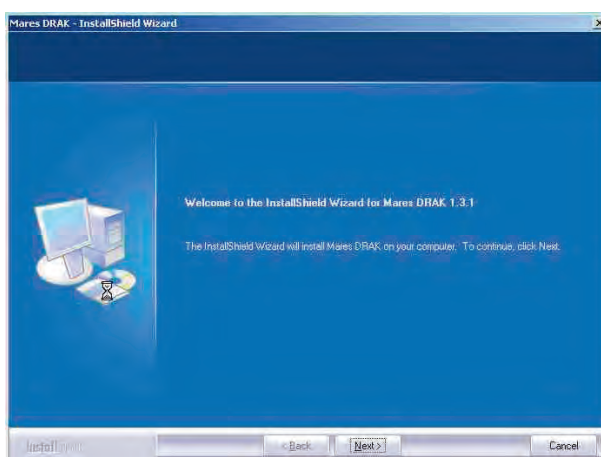
You can find Mares on the internet at: <http://www.mares.com>.

Select your language and search for the current software version for your diving computer under "download" and "diving computer".

Smartinterface Drak



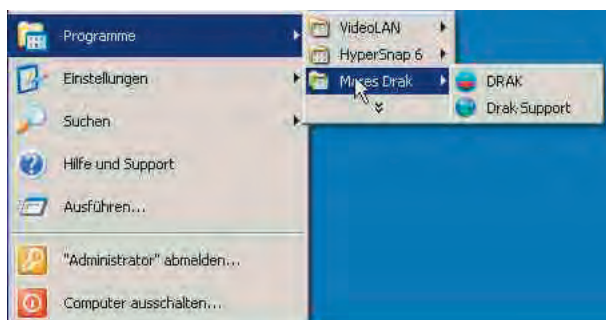
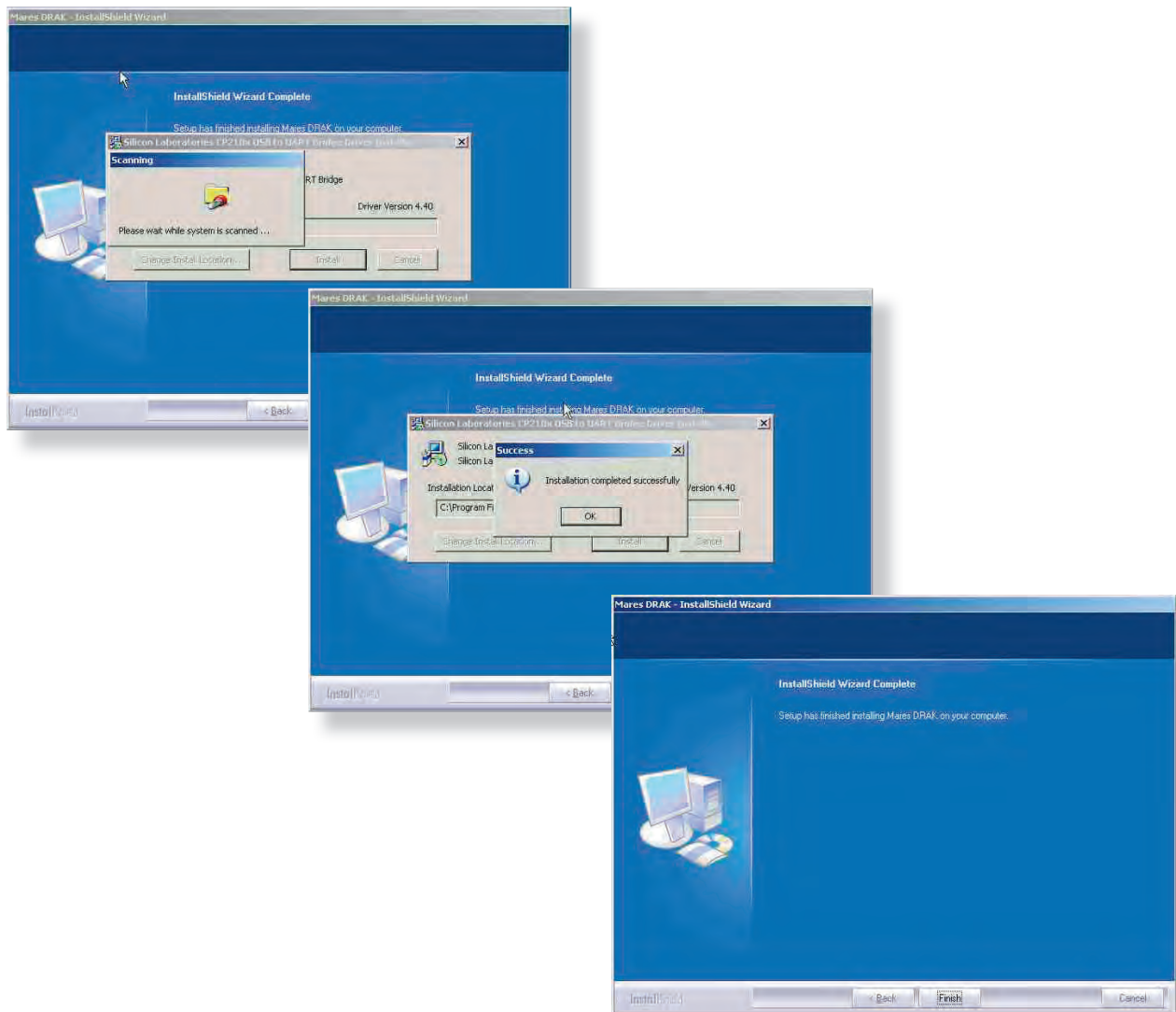
1.0 Once the download is complete, start the installation and follow the instructions.



1.2 The USB driver for the interface is installed at this point. Confirm the installation path by clicking on "install".

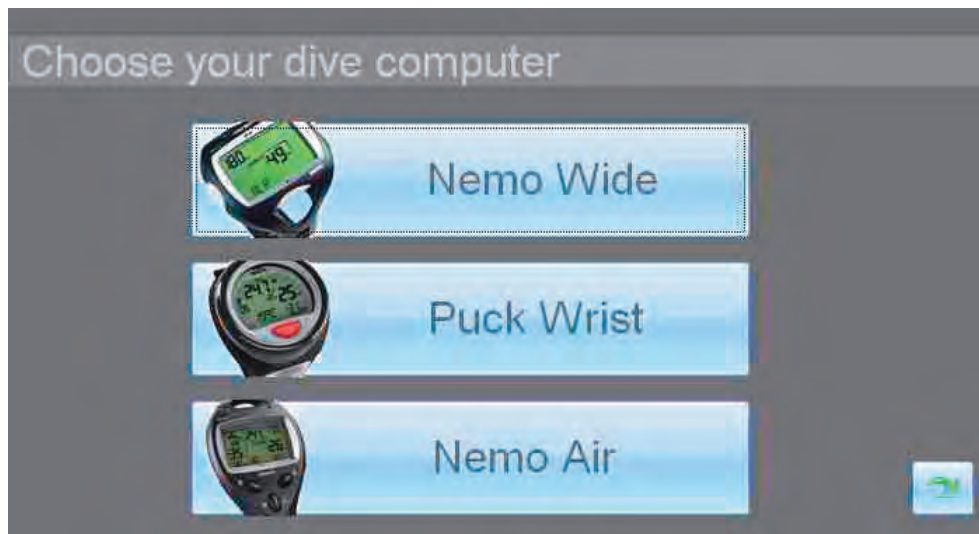
Do not connect the interface yet!

Smartinterface Drak

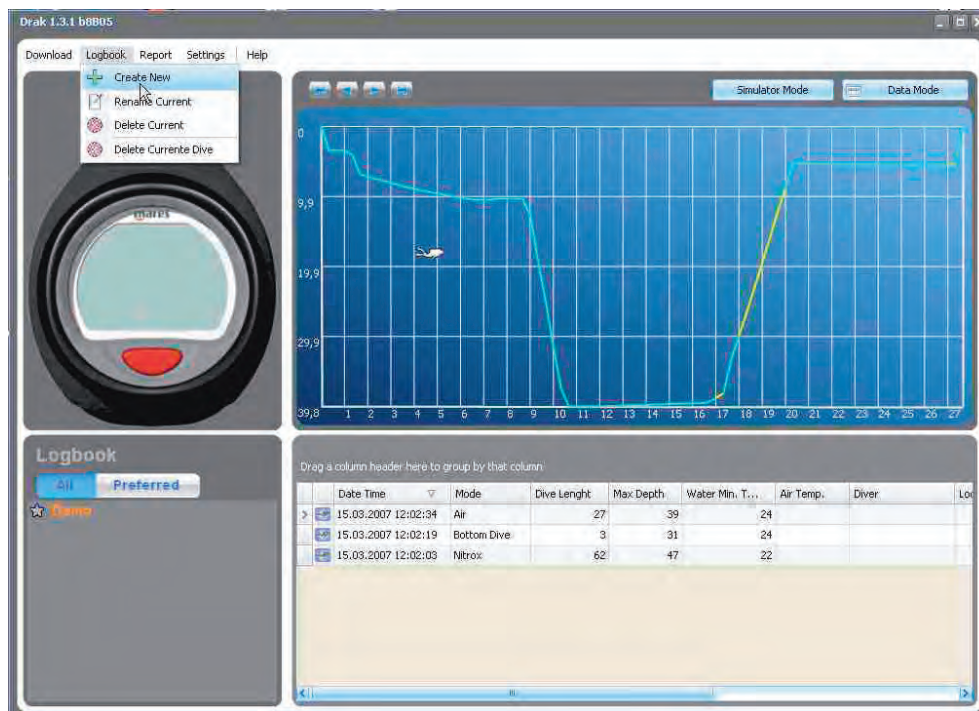


1.3 The installation is now complete and you will find a new icon in your program folder via which you are able to start the read out software.

Smartinterface Drak

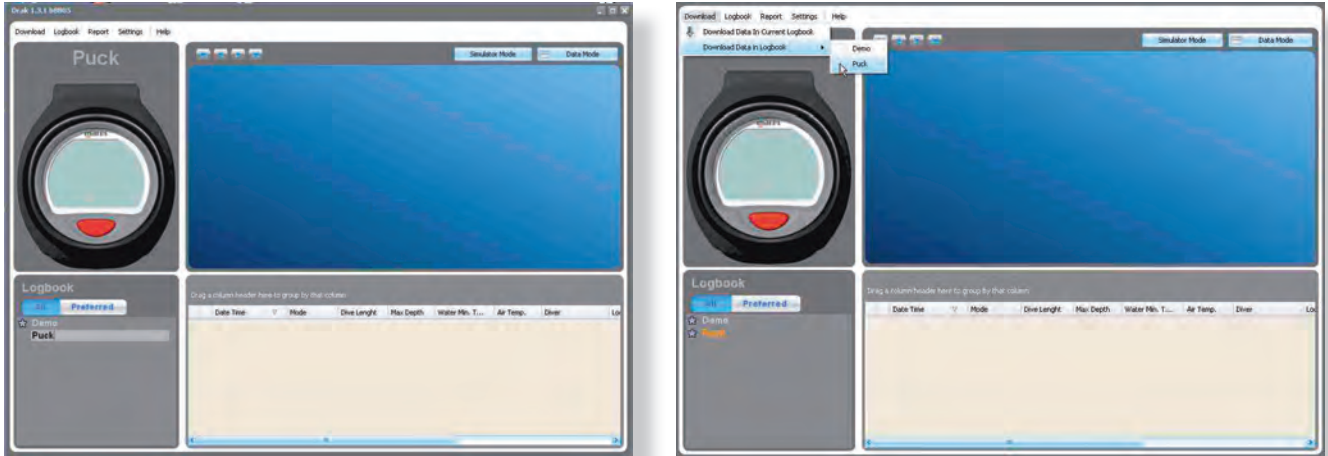


1.4 Now select your diving computer.

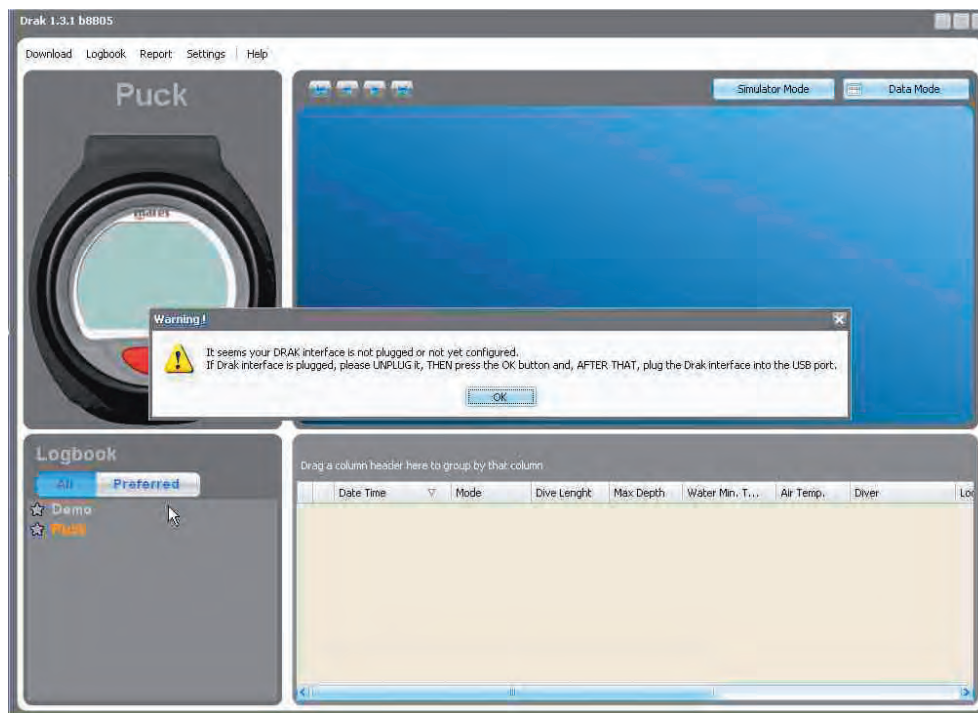


1.5 First create a new logbook with a name of your choosing. In this example: Puck

Smartinterface Drak



1.6 In order to load the data from your diving computer, select your logbook under download.

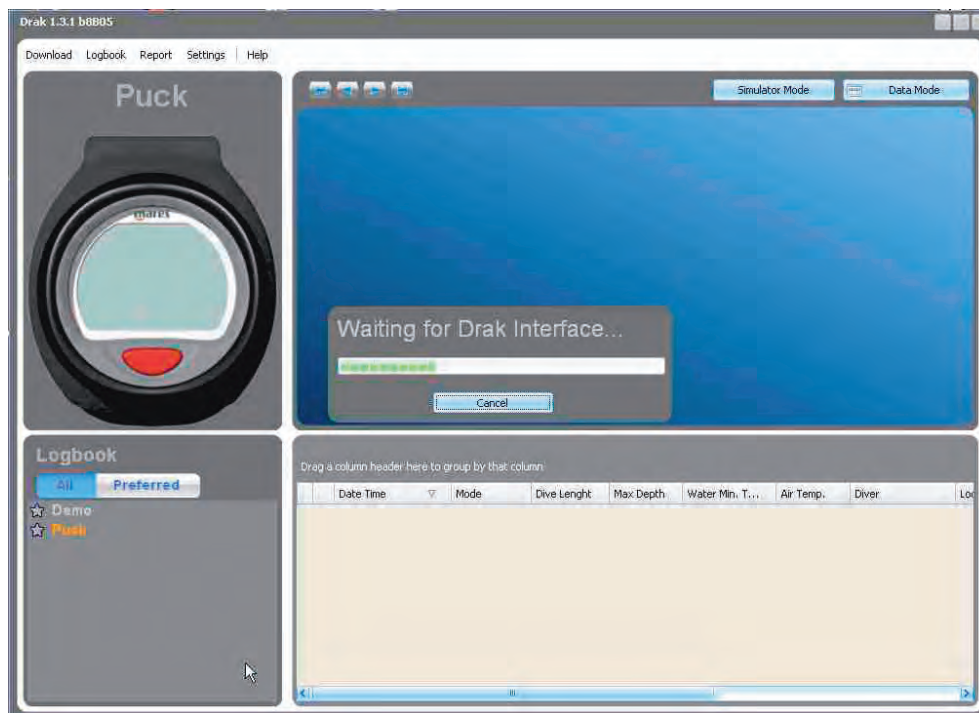


1.7 Now click on "OK".

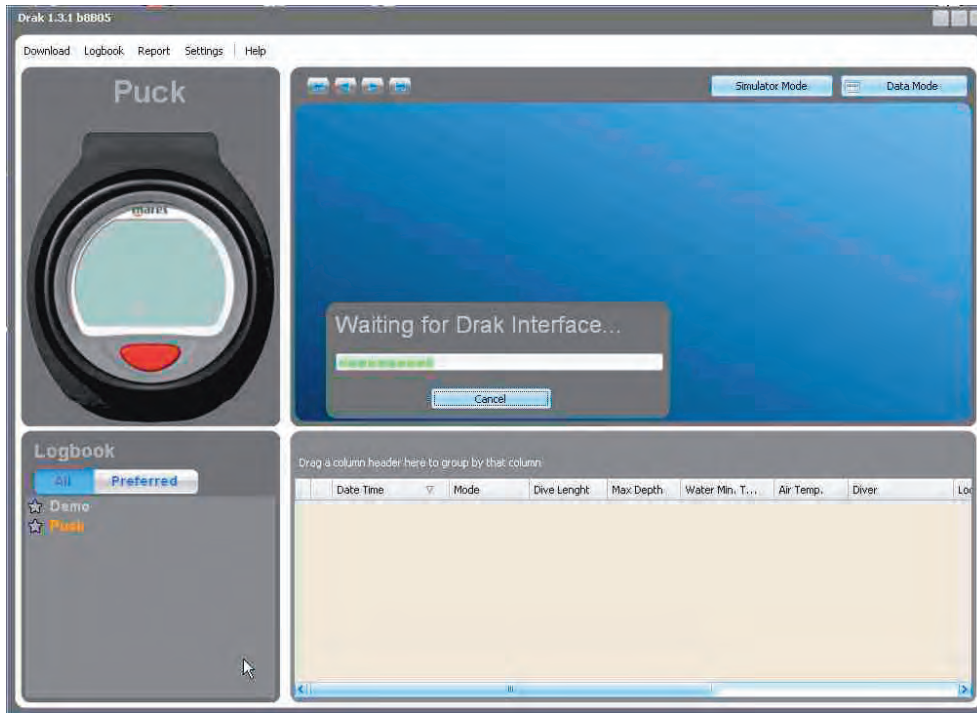
Smartinterface Drak



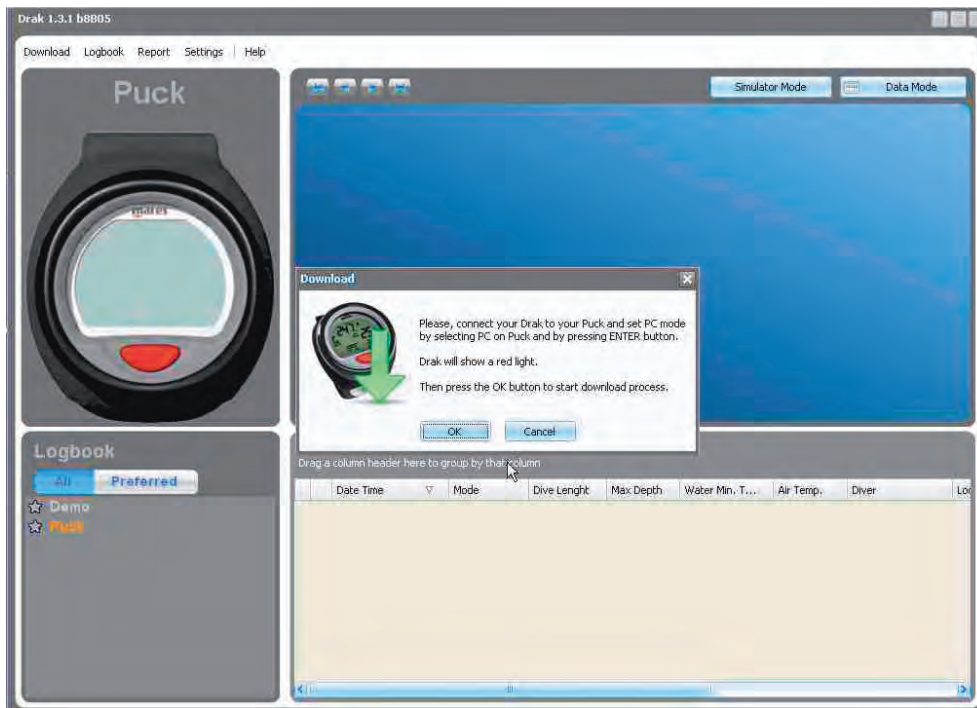
It is now finally time to connect your new interface to the computer.



Smartinterface Drak



2.0 The interface has been recognised by the computer and a green light is illuminated.



Smartinterface Drak



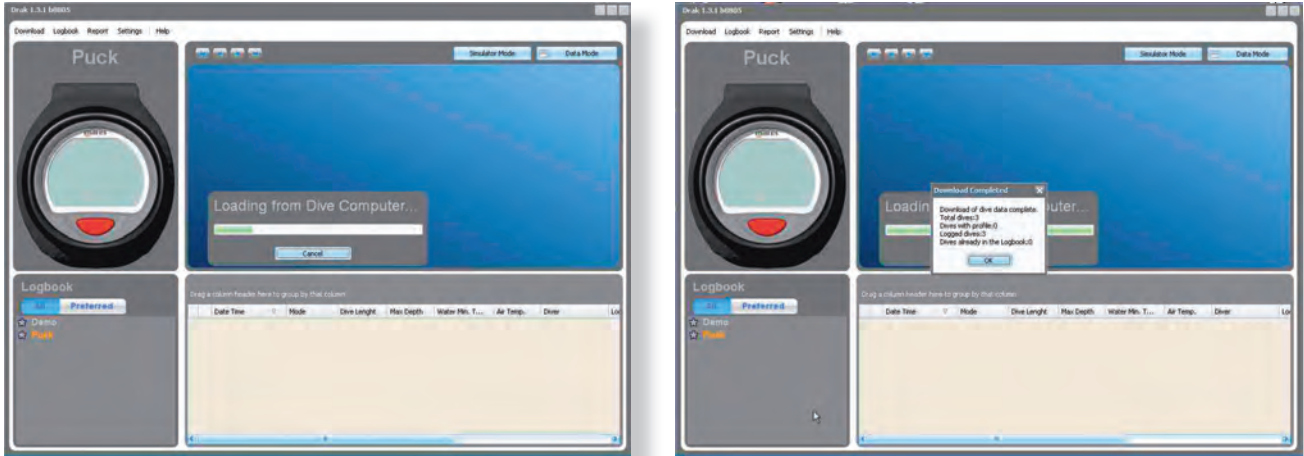
2.1 Now set your diving computer to the PC transfer mode...



2.2 and connect the interface to your diving computer. The direction does not matter. The interface recognises the direction automatically and starts to illuminate red.

Smartinterface Drak

2.3 After clicking on “OK”, data read out commences.

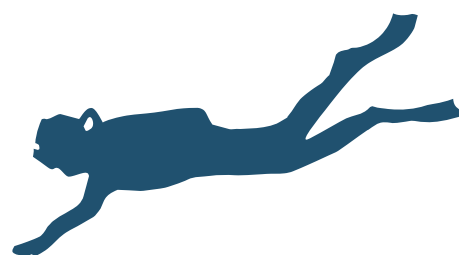


2.4 The data has now been transferred successfully to your PC.

Should you have any software-related questions, please contact Mares Support.

Index of Contents

1.0	Once the download is complete, start the installation and follow the instructions.	2
1.2	The USB driver for the interface is installed at this point. Confirm the installation path by clicking on "install".	2
1.3	The installation is now complete and you will find a new icon in your program folder via which you are able to start the read out software.	3
1.4	Now select your diving computer.	4
1.5	First create a new logbook with a name of your choosing. In this example: Puck	4
1.6	In order to load the data from your diving computer, select your logbook under download.	5
1.7	Now click on "OK". It is now finally time to connect your new interface to the computer.	6
2.0	The interface has been recognised by the computer and a green light is illuminated.	7
2.1	Now set your diving computer to the PC transfer mode...	8
2.2	and connect the interface to your diving computer. The direction does not matter. The interface recognises the direction automatically and starts to illuminate red.	8
2.3	After clicking on "OK", data read out commences.	9
2.4	The data has now been transferred successfully to your PC. Should you have any software-related questions, please contact Mares Support.	9



Publisher Technisches Büro Kühnhold
Ehestorfer Weg 155
21075 Hamburg · Germany

<http://www.smartinterface.de> · info@smartinterface.de

Copyright All images and text in this instruction manual, as well as the instruction manual itself are copyright protected, any further use must be approved in writing by www.smartinterface.de.

Copyright and labeling All brands and trademarks specified within the description and, where applicable, protected by a third party are subject without restriction to the terms and conditions of the respectively valid right to use a symbol and the ownership rights of each registered owner.
The mere mention thereof shall not be construed to represent that the trademarks are not protected by third party rights! The brand names and trademarks used in this documentation are the property of the respective rights owners and are used here only for descriptive purposes.

Disclaimer The devices, tools and interfaces were thoroughly tested prior to the delivery. Connection, use and operation shall be at your own risk. No liability shall be assumed for damage or loss of data or lack of waterproofness.

Recycling European Union – Disposal information: This symbol indicates that this product must be disposed of pursuant the valid legal provisions and separated from domestic waste.
Bring this product to an official collection point for disposal. Products can be brought to some collection points for disposal free of charge. Separate collection and recycling conserves raw material reserves and ensures compliance with all regulations for the protection of health and the environment when recycling the product.



CE  **RoHS** ✓
WEEE-Reg.-Nr. DE82497460