

Instruction Manual

Smartinterface D469

Hinweis: Diese Anleitung wurde von einer neueren Version abgelöst. Sie finden die neue Anleitung *hier*. Please note: There is a newer version of these instructions that you can find *here*. Veuillez noter qu'il existe une nouvelle version de ces instructions que vous pourrez trouver *ici*. Questo manuale è stato sostituito da uno nuovo. Trovate il nuovo manuale *qui*.



Instruction Manual - Smartinterface USB

At first, please install the Suunto Dive Manager (SDM) Software on your PC.

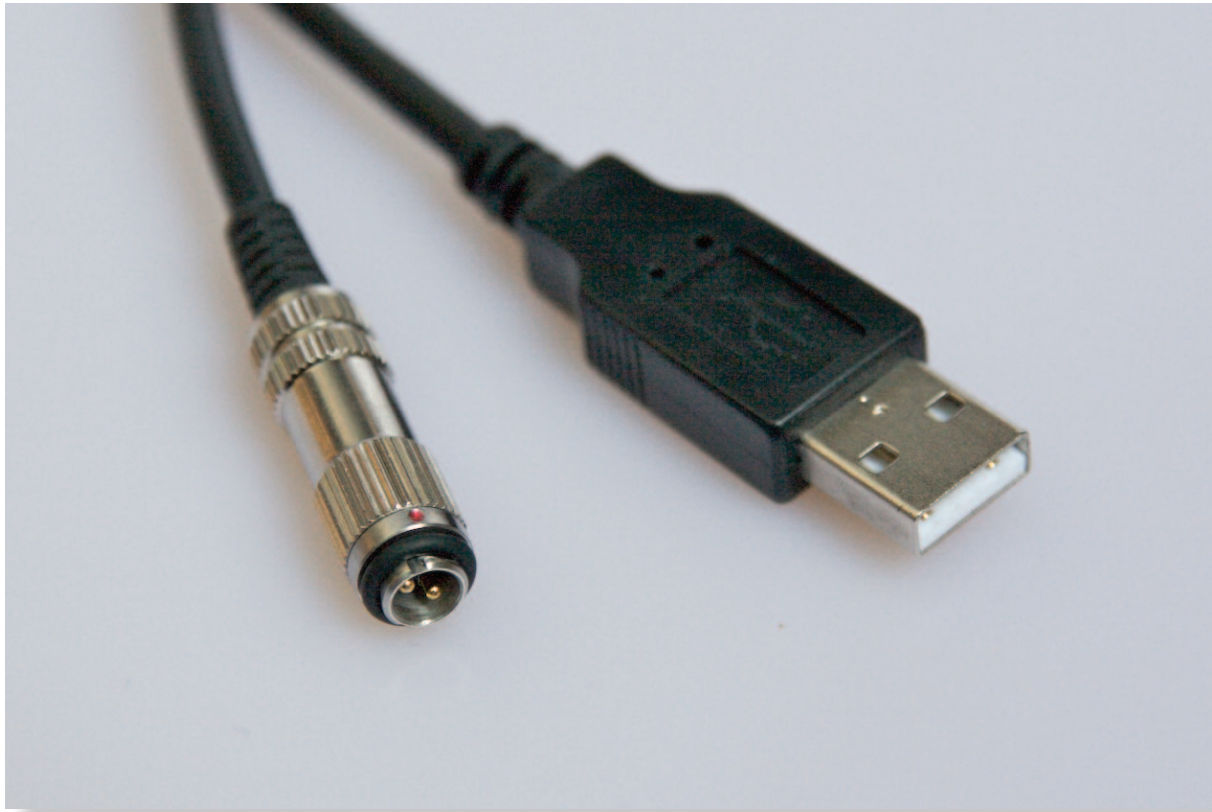
You may choose Express Installation or the normal Driver Installation by Windows. For Express Installation don't connect the Interface! Start the Smartinterface ExpressSetup.exe and follow the Instructions on the screen.

You can download the Drivers and the Software under: <http://www.smartinterface.de>.

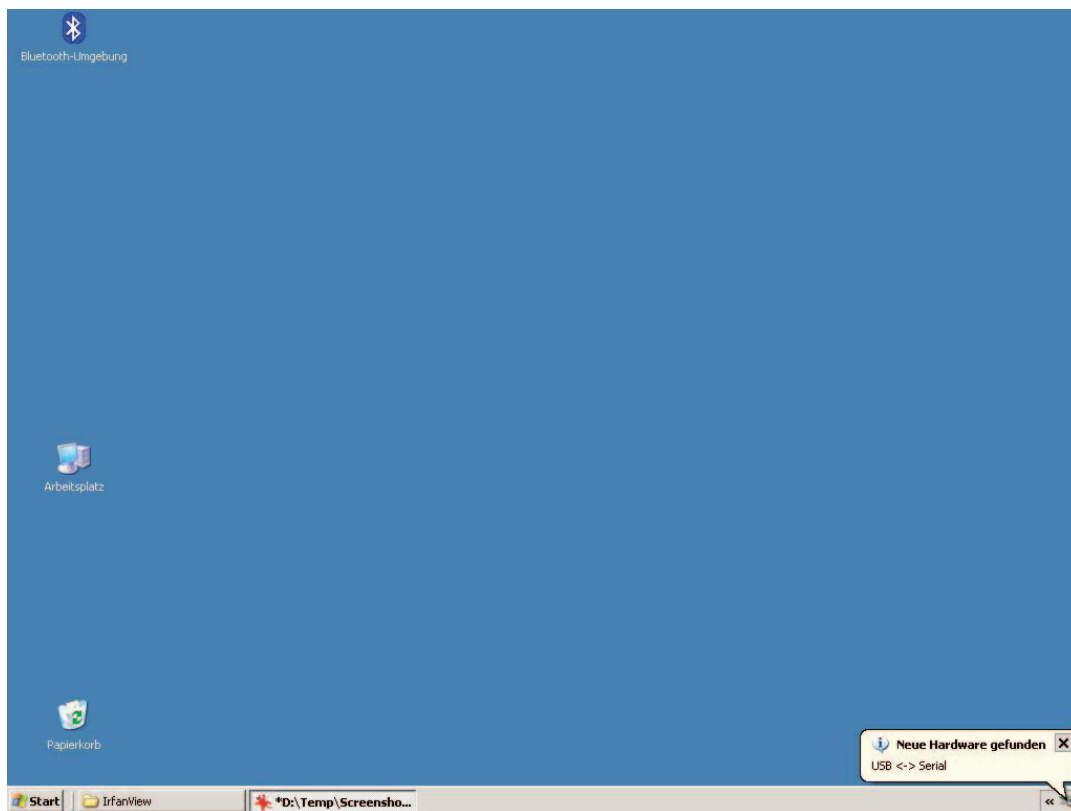
Please proceed with Point 3.3 from this manual after connecting the USB Interface to a free USB Port of your PC.

Attention: Please close the SDM Software before you install the USB Driver!

Smartinterface D469

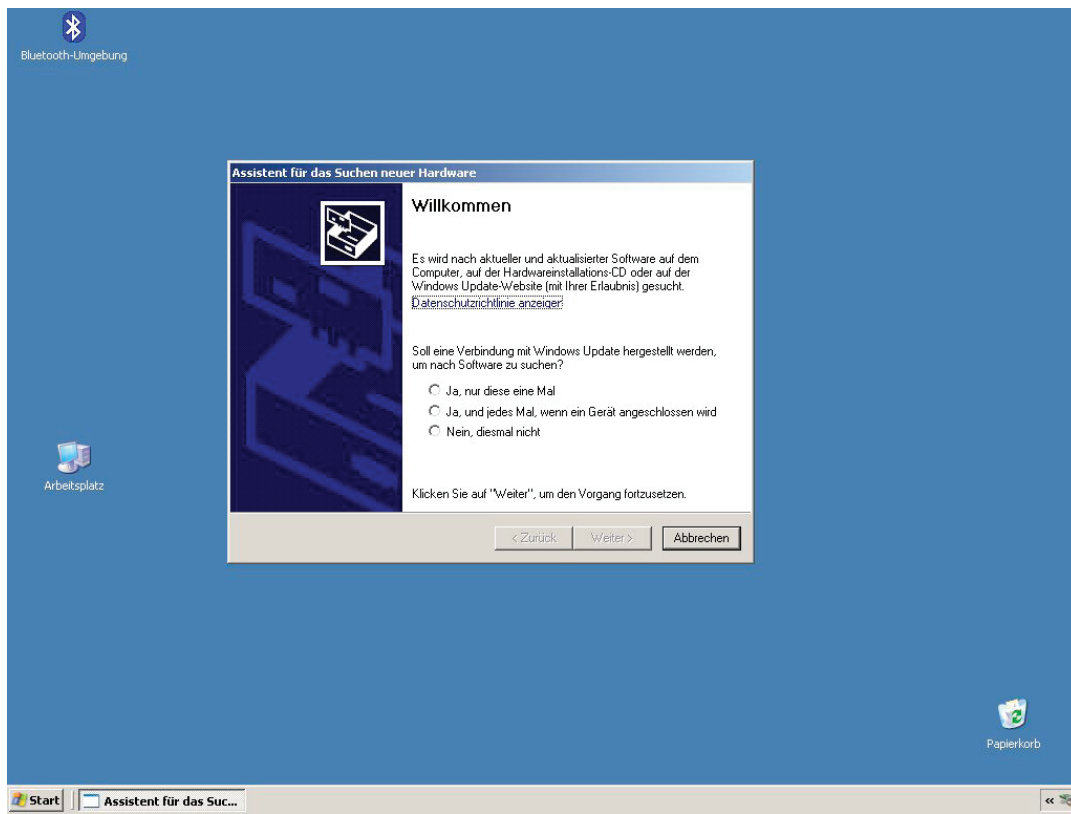


1.0 Connect the Smartinterface with a free USB Port.
(The Dive Computer is not connected in this moment.)

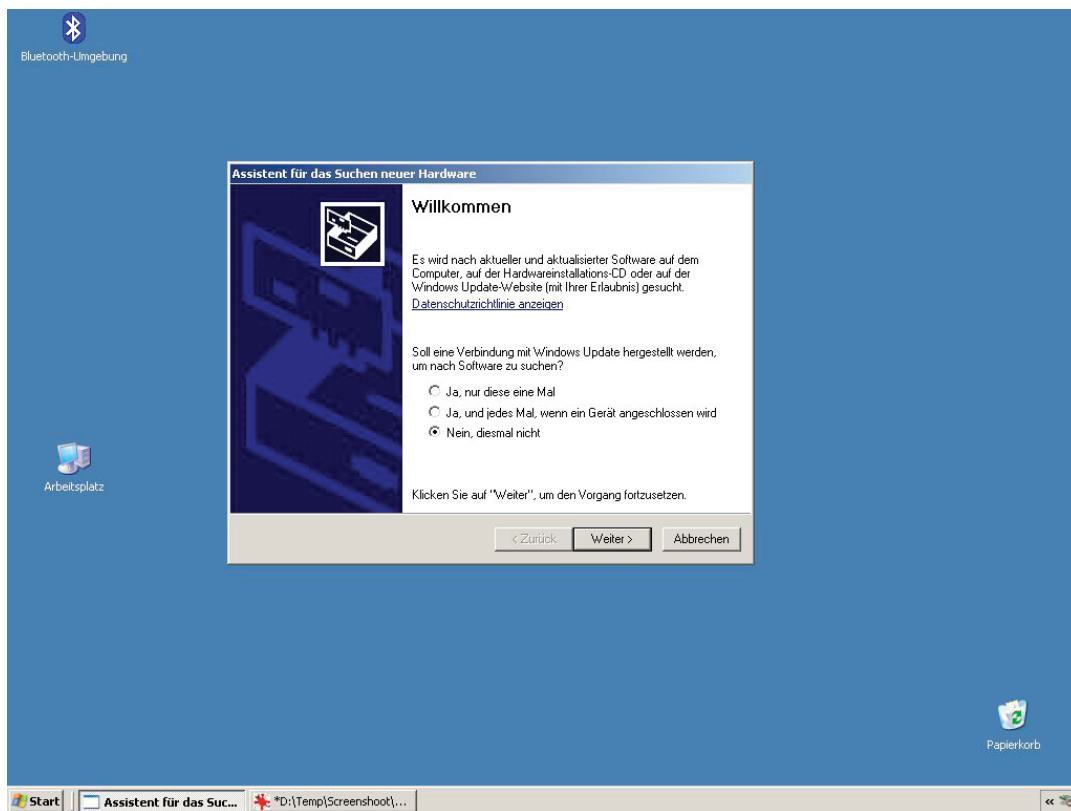


2.0 Windows XP will identify the USB Interface automatically and will open the dialog for Installation.

Smartinterface D469

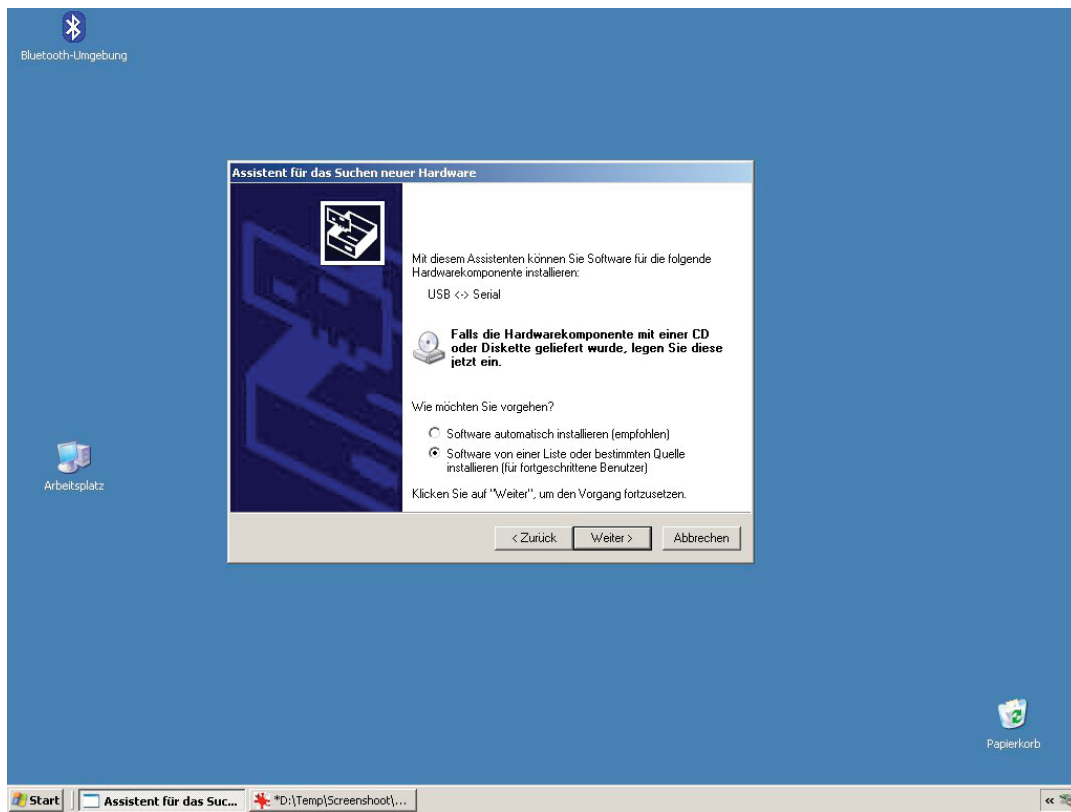


2.1 The Installation Assistant recommends the Driverdownload from the Internet.

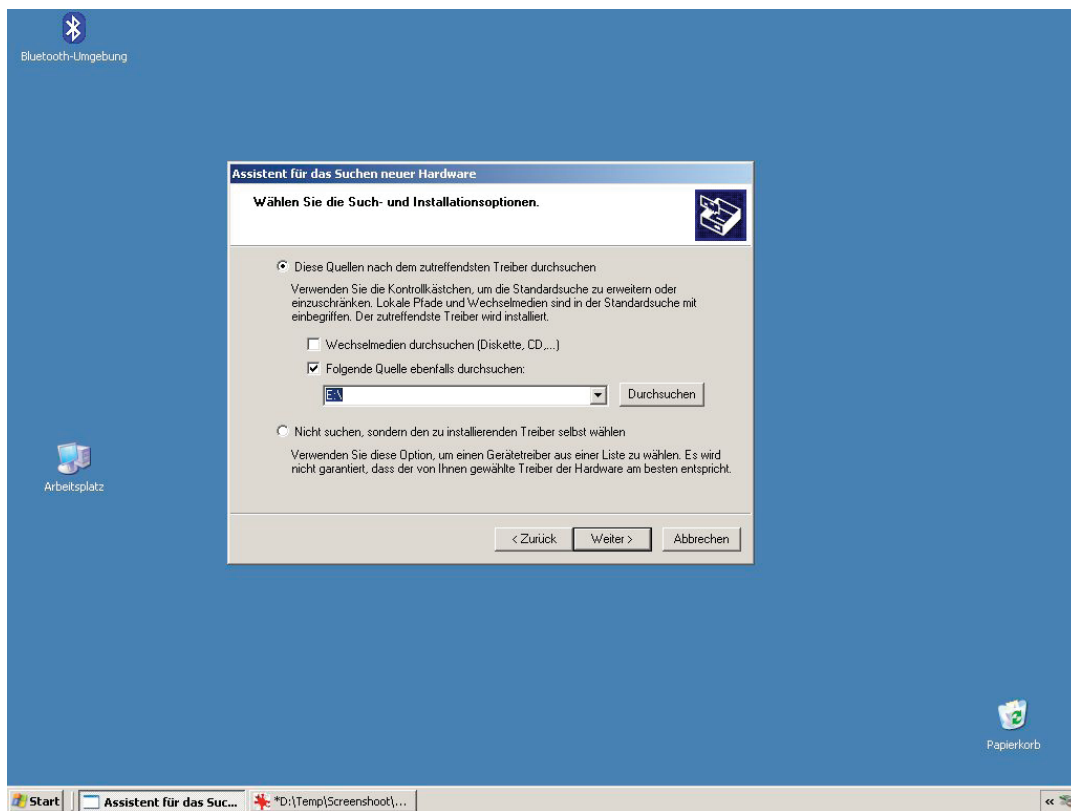


2.2 Please choose no, and take the Driver from CD.

Smartinterface D469

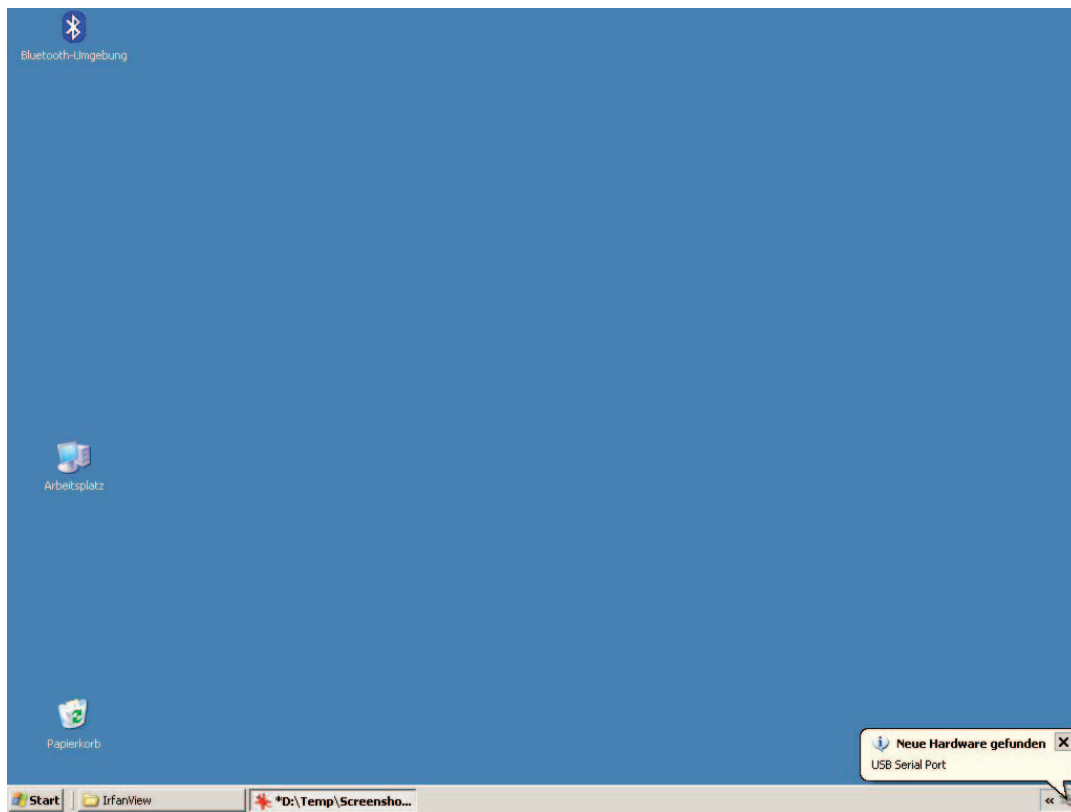


2.3 Next Step: Choose Software from specified Source.

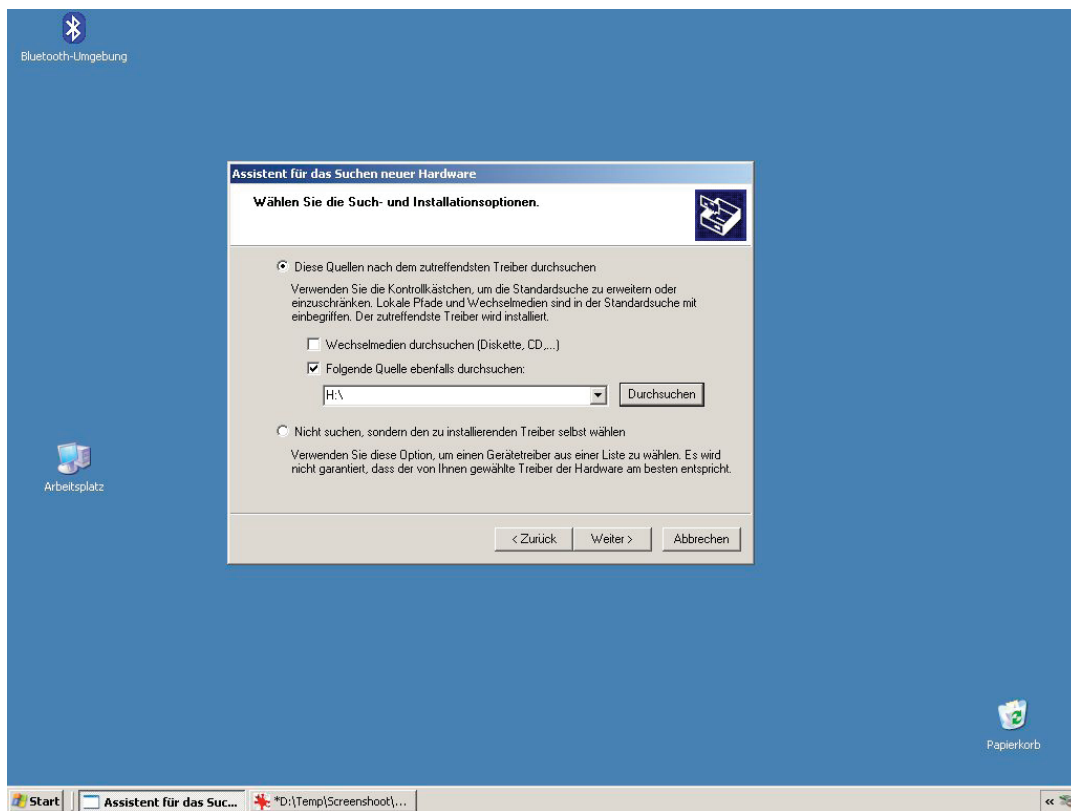


2.4 Source is the Drive an Installation Path on CD-ROM.

Smartinterface D469

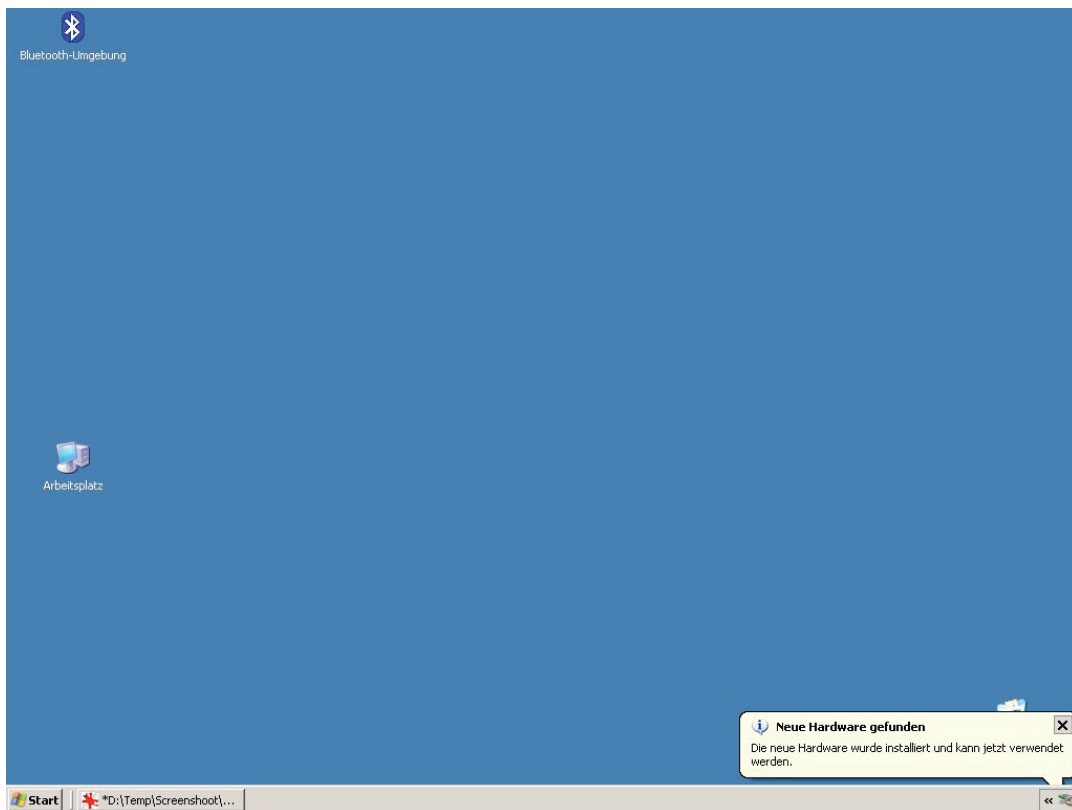


3.0 Now the Hardware Assistant initializes the USB Serial Port.

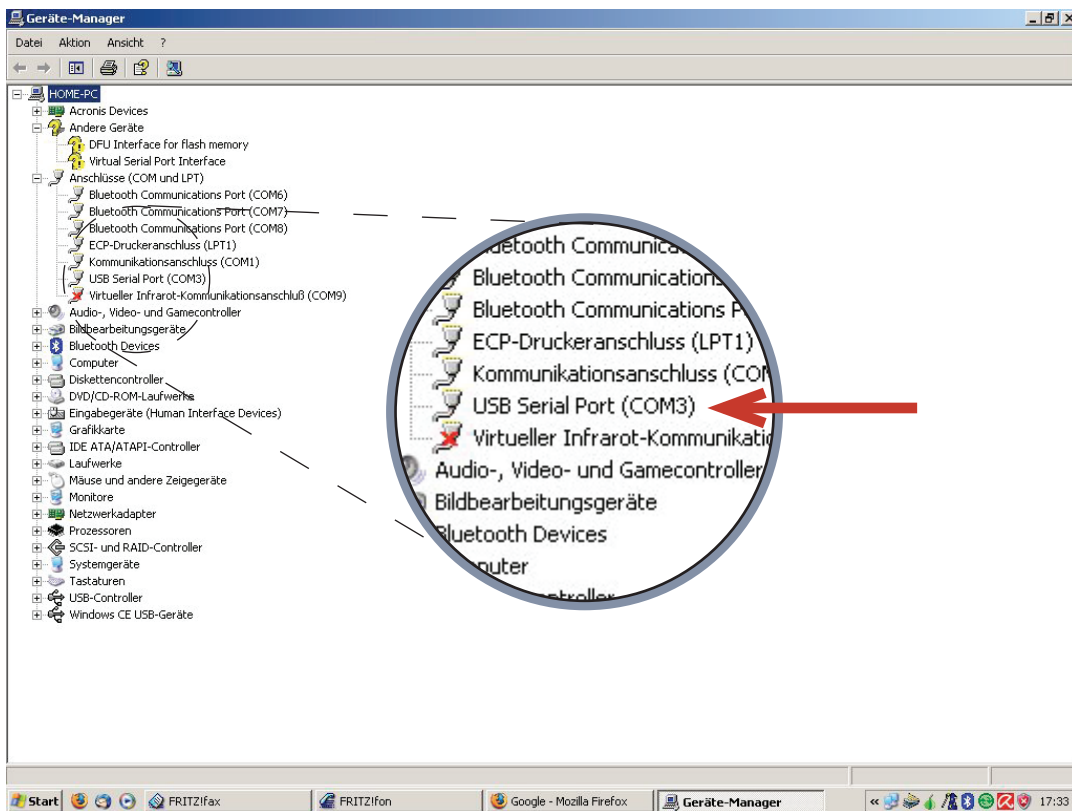


3.1 Choose again the Drive with the Installation Path (CD-ROM)

Smartinterface D469



3.2 After Installation a Message appears



3.4 You can control the successful installation in the hardware manager. Have a look at the number of comport that newly build!

Smartinterface D469



4.0 Connect the Interface with the Divecomputer.



4.1 Plug in the connector at the red point and turn them clockwise.

Smartinterface D469



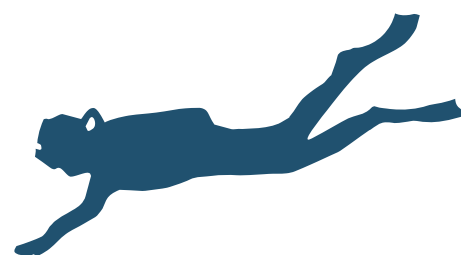
4.2 The Divingcomputer switches after turning automatically to the Transfer-Mode.

Datatransfer

The Smartinterface is now ready for Use. Start your Dive Manager Software like SDM from Suunto Make sure, that the Divecomputer is connected before you start the Manager Software.

Index of Contents

1.0	Connect the Smartinterface with a free USB Port. (The Dive Computer is not connected in this moment.)	2
2.0	Windows XP will indentify the USB Interface automatically and will open the dialog for Installation.	2
2.1	The Installation Assistant recommends the Driverdownload from the Internet.	3
2.2	Please choose no, and take the Driver from CD.	3
2.3	Next Step: Choose Software from specified Source.	4
2.4	Source is the Drive an Installation Path on CD-ROM.	4
3.0	Now the Hardware Assistant initializes the USB Serial Port.	5
3.1	Choose again the Drive with the Installation Path (CD-ROM)	5
3.2	After Installation a Message appears	6
3.4	You can control the successful installation in the hardware manager. Have a look at the number of comport that newly build!	6
4.0	Connect the Interface with the Divecomputer.	7
4.1	Plug in the connector at the red point and turn them clockwise.	7
4.2	The Divingcomputer switches after turning automatically to the Transfer-Mode.	8



Publisher Technisches Büro Kühnhold
Ehestorfer Weg 155
21075 Hamburg · Germany

<http://www.smartinterface.de> · info@smartinterface.de

Copyright All images and text in this instruction manual, as well as the instruction manual itself are copyright protected, any further use must be approved in writing by www.smartinterface.de.

Copyright and labeling All brands and trademarks specified within the description and, where applicable, protected by a third party are subject without restriction to the terms and conditions of the respectively valid right to use a symbol and the ownership rights of each registered owner.
The mere mention thereof shall not be construed to represent that the trademarks are not protected by third party rights! The brand names and trademarks used in this documentation are the property of the respective rights owners and are used here only for descriptive purposes.

Disclaimer The devices, tools and interfaces were thoroughly tested prior to the delivery. Connection, use and operation shall be at your own risk. No liability shall be assumed for damage or loss of data or lack of waterproofness.

Recycling European Union – Disposal information: This symbol indicates that this product must be disposed of pursuant the valid legal provisions and separated from domestic waste.
Bring this product to an official collection point for disposal. Products can be brought to some collection points for disposal free of charge. Separate collection and recycling conserves raw material reserves and ensures compliance with all regulations for the protection of health and the environment when recycling the product.



CE  **RoHS** ✓
WEEE-Reg.-Nr. DE82497460